

### 8023 CATCH BASIN CURB INLET

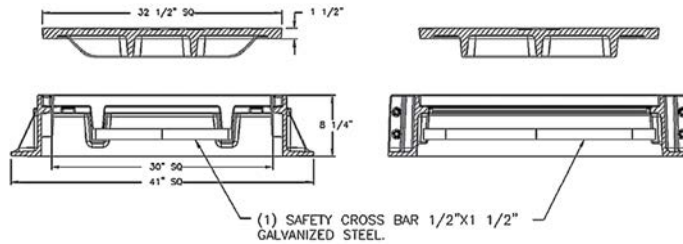
Heavy duty  
Bolted down assembly

Options  
Two or three cover unit  
Continuous assemblies available



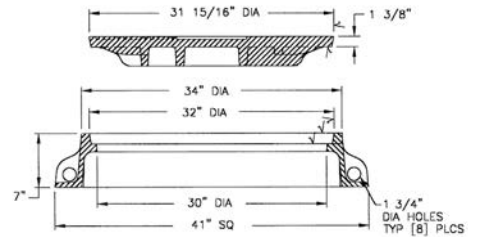
Top View

Bottom View



### 8027 FRAME & COVER

Heavy duty  
Vertical and horizontal machined surfaces



### 8032 FRAME & GRATE

Light duty (Non-traffic)  
Adapter frame grate  
Approximate 1729 sq. in. open area

